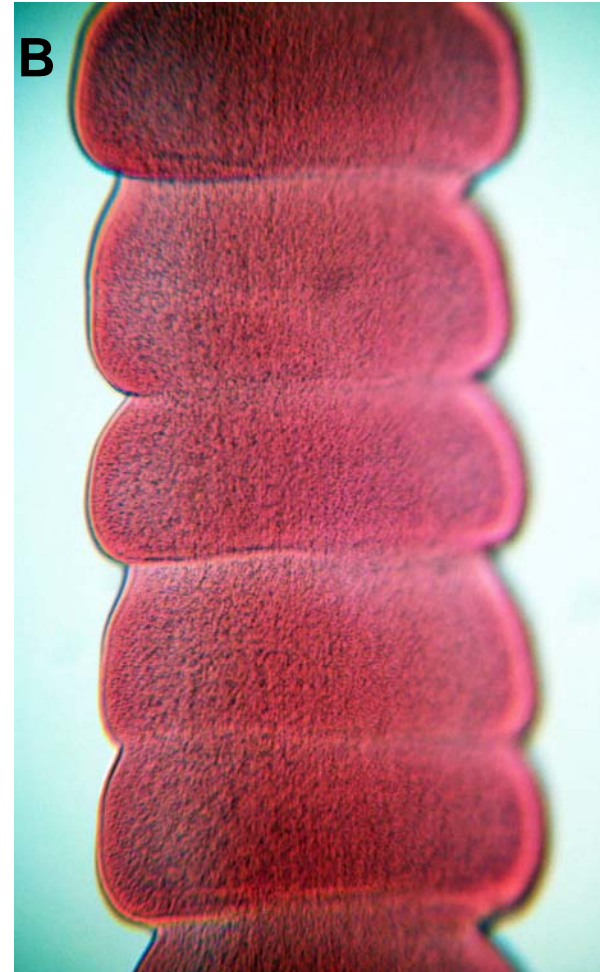


Bothriocephalus archeilognathi – ex: *Notropis* sp.
Scolex with groove-like bothrium (A); immature proglottids (B).
(Note: eggs in bothrium are an artifact).



B. archeilognathi mature/gravid proglottids. Legend: e, eggs (in uterus);
t, testes (residing among vitelline glands); up, uterine pore.

